

**\$75** A NIGHT IN ST. THOMAS  
AND MORE HOT DEALS

ISLAND-HOPPING ON A BUDGET  
FROM ST. VINCENT TO BEQUIA

FOODIE  
ALERT!  
LOOK WHAT'S  
COOKIN' IN  
CANCUN

# CARIBBEAN

TRAVEL+LIFE

## 10 Best Beaches

FOR SNORKELING!

### Turks & Caicos

THE WATER-SPORTS  
LOVER'S GUIDE

### Virgin Islands

DELUXE HIDEAWAYS &  
WORLD-CLASS YACHTING

### Belize

NEW DIGS FROM  
REEF TO RAINFOREST



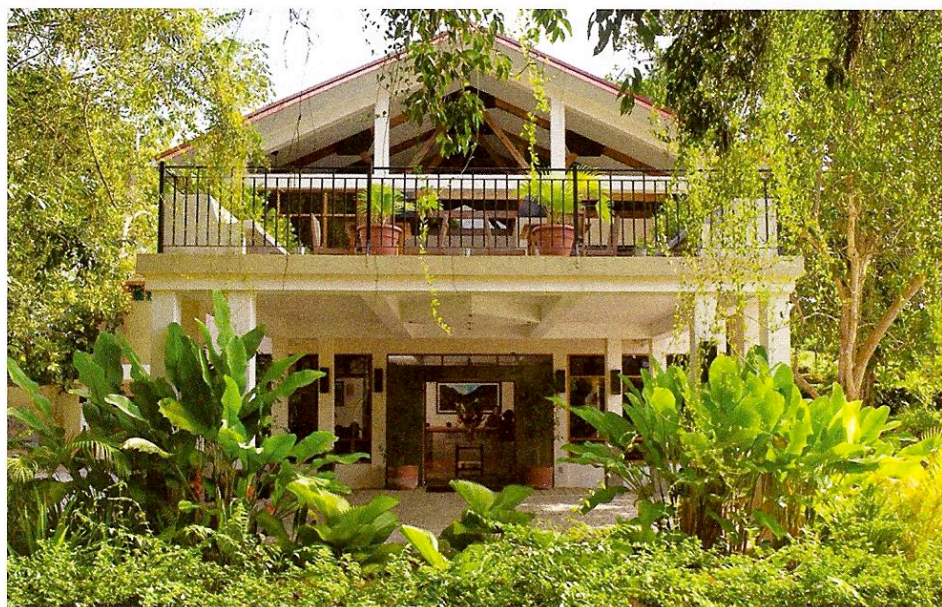
**WHALE  
SHARKS!**  
TINY ISLAND,  
BIG ADVENTURE

MAY 2009 US \$4.99



**CARIBBEAN**

CARIBBEANTRAVELMAG.COM



BELIZE

# Comin' On Strong

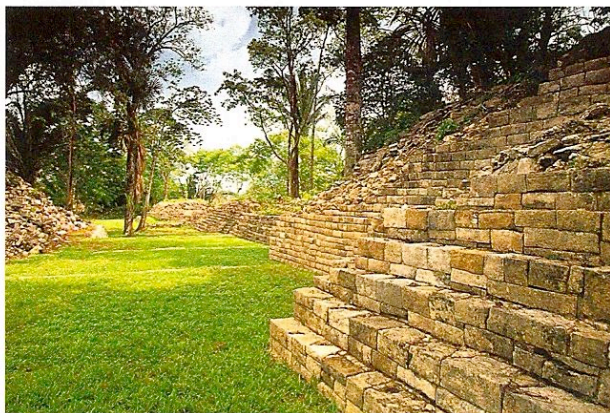
WITH 180 MILES OF PALM-LINED SEAFRONT, a strong Creole-African community and a variety of water sports on an outstanding barrier reef, parts of Belize feel typically Caribbean. But make no mistake: This Central American country just south of Mexico's Yucatán peninsula (and a two-hour flight from Miami) moves to its own rhythm. And with new construction progressing at a feverish pace, the beat is rapidly picking up momentum.

**INTERIOR DESIGNS** The jungle embraces historic Maya ruins in the inland Cayo District, where several small lodges are scattered throughout the mountainous forest. But there are at least two good reasons to stay at the new **Ka'ana Boutique Resort**: Its central location means shorter travel times for sightseeing, and for those who can't handle a full-frontal jungle experience, the 15-room inn delivers creature comforts such as air conditioning, flat-screen TVs and espresso makers. Its popular restaurant attracts locals from nearby San Ignacio, and the all-

inclusive option offers good value at an additional \$110 per person per day.

While you're in Cayo, join a Yute Expeditions' canoe excursion to **Barton Creek Cave**, a Maya burial ground in an eerie, 200-foot-high cavern. Or tour the 45-acre **Belize Botanic Gardens**, which offers two miles of nature trails, workshops with traditional healers and an orchid house that shelters more than 100 species, including the national flower, the black orchid.

**ON THE COAST** Eleven miles long and in some places barely 100 feet wide, the Placencia Peninsula is quickly



**STEP TO IT** The blessedly uncrowded Lubaantun Maya ruins. Ka'ana Resort (top) is a jungle lodge that puts the "soft" in soft adventure.

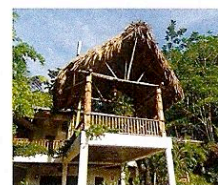
## Belize

### THE AGENDA

**STAY**

**Akbol**  
011-501-226-2073  
akbol.com  
From \$75 in low season (\$135 high)

**Ka'ana Boutique Resort**  
877-522-6221  
kaanabelize.com  
From \$250 in low season (\$300 high)



**Machaca Hill**  
011-501-772-0050  
machacahill.com  
From \$650 all-inclusive per person in low season (\$725 high)

**The Nautical Inn**  
888-790-5264  
nauticalinnbelize.com  
From \$86 in low season (\$136 high)

**Turtle Inn**  
800-746-3743  
turtleinn.com  
From \$285 in low season (\$375 high)

**EAT**

**La Playa Lounge**  
011-501-226-4710  
Entrées from \$6

**Red Ginger**  
011-501-226-4623  
Entrées from \$17



**PLAY**

**Belize Botanic Gardens**  
011-501-824-3101  
belizebotanic.org  
Admission \$5; tours \$15

**Yute Expeditions**  
011-501-824-2076  
inlandbelize.com  
Half-day trip to Barton Creek Cave is \$125 per couple.

CLOCKWISE FROM TOP: KA'ANA; DAVID SWANSON; BRETT ATOMS; SIMÉ S.A.S./ESTOCK PHOTO